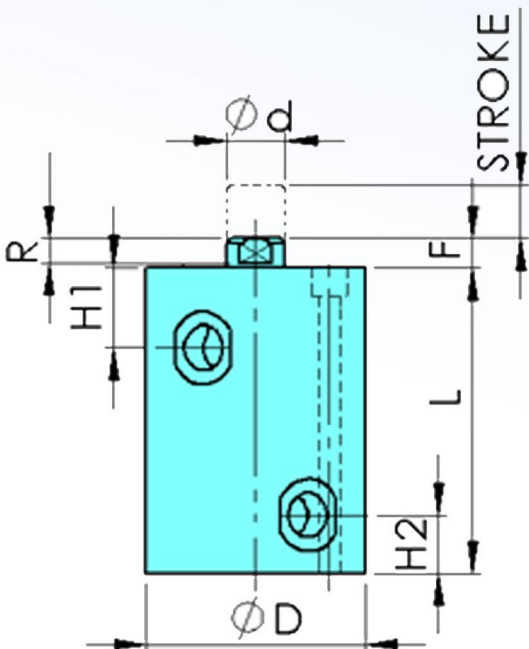
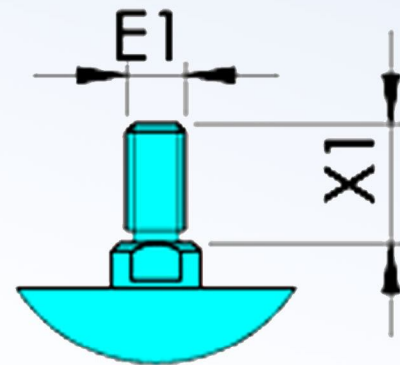
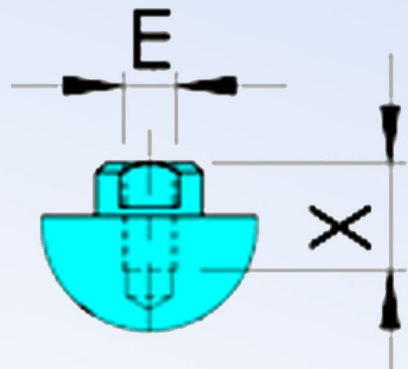
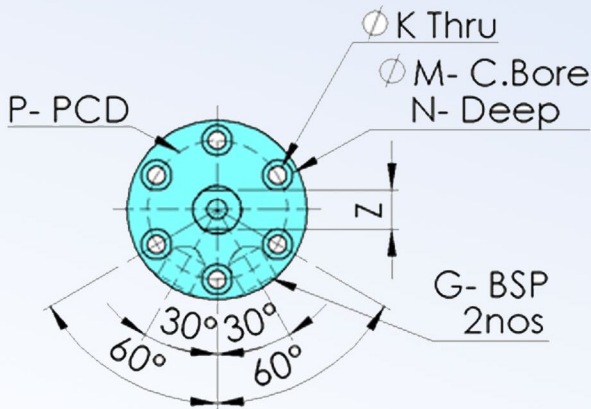


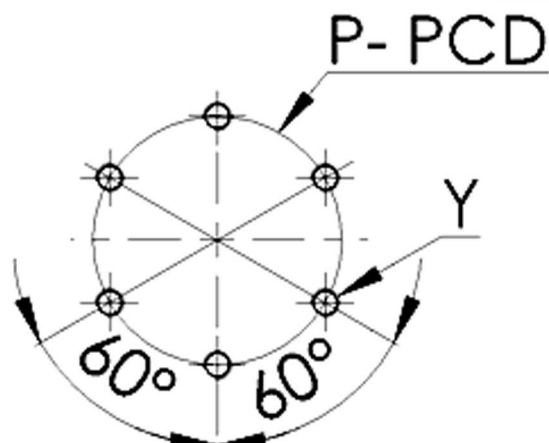


- ✦ Compact design with higher clamping force.
- ✦ Min /Max operating pressure 10/70 bar
- ✦ It can be used doing pushing & pulling
- ✦ It can be used with the stroke range 10,25,40

✦ Outline Dimension

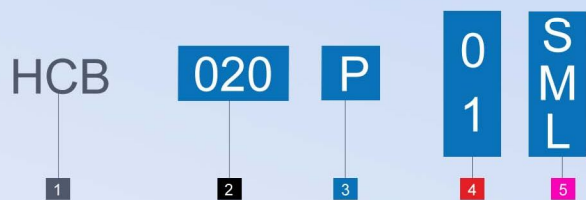


✦ Machining Dimension



KNOW HOW TO ORDER

- 1 Round block shape
- 2 Bore Dia
- 3 Piping Method
- 4 Shaft Thread Type  
(0=Female thread, 1=Male thread)
- 5 Stroke



Dimension Table

MODEL	HCB020 <b>P 0 1 S M L</b>			HCB032 <b>P 0 1 S M L</b>			HCB040 <b>P 0 1 S M L</b>			HCB050 <b>P 0 1 S M L</b>		
PISTON DIA	20			32			40			50		
ROD DIA (d)	12			16			20			25		
STROKE (S,M,L)	10	25	40	10	25	40	10	25	75	25	50	75
D	45			65			76			95		
E	M6 X 1P			M10 X 1.5P			M12 X 1.75P			M16 X 2P		
E1	M10 X 1.5P			M12 X 1.75P			M16 X 2P			M20 X 1.5P		
F	6			6			7			10		
G	1/8" BSP			1/8" BSP			1/8" BSP			1/4" BSP		
H1	16.5			16.5			17.5			22.5		
H2	12			12			12			12		
K	4.5			6.6			6.6			9		
L	48	63	78	48	63	78	52	67	82	58	73	88
M	7.5			10.5			11			14		
N	6			7			7			9		
P	35			50			60			75		
R	5			5			6			6		
X	15			20			22			25		
X1	16			18			22			25		
Z	10			14			18			22		

Specification Table

MODEL	HCB020 <b>P 0 1 S M L</b>			HCB032 <b>P 0 1 S M L</b>			HCB040 <b>P 0 1 S M L</b>			HCB050 <b>P 0 1 S M L</b>		
PUSHING FORCE 70 bar KN	2.2			3.43			5.63			8.79		
PULLING FORCE 70 bar KN	1.41			2.08			3.43			5.63		
STROKE (S,M,L)	10	25	40	10	25	40	10	25	40	25	50	75
Temperature °C	0-70											
Weight (KG)	0.5	0.6	0.8	1.0	1.3	1.6	1.6	2.0	2.4	2.8	3.3	4.0
Cyl volume push c.m.q	3.2	7.9	12.6	8.0	20.1	32.2	12.6	31.4	50.3	19.6	49.0	78.5
Cyl volume pull c.m.q	2.0	5.1	8.0	6.0	15.1	24.2	9.4	23.6	37.7	14.8	36.8	59.0

Machining dim. Table for mounting

MODEL	HCB020 <b>P 0 1 S M L</b>			HCB032 <b>P 0 1 S M L</b>			HCB040 <b>P 0 1 S M L</b>			HCB050 <b>P 0 1 S M L</b>		
P	35			50			60			75		
Y	M4			M6			M6			M8		